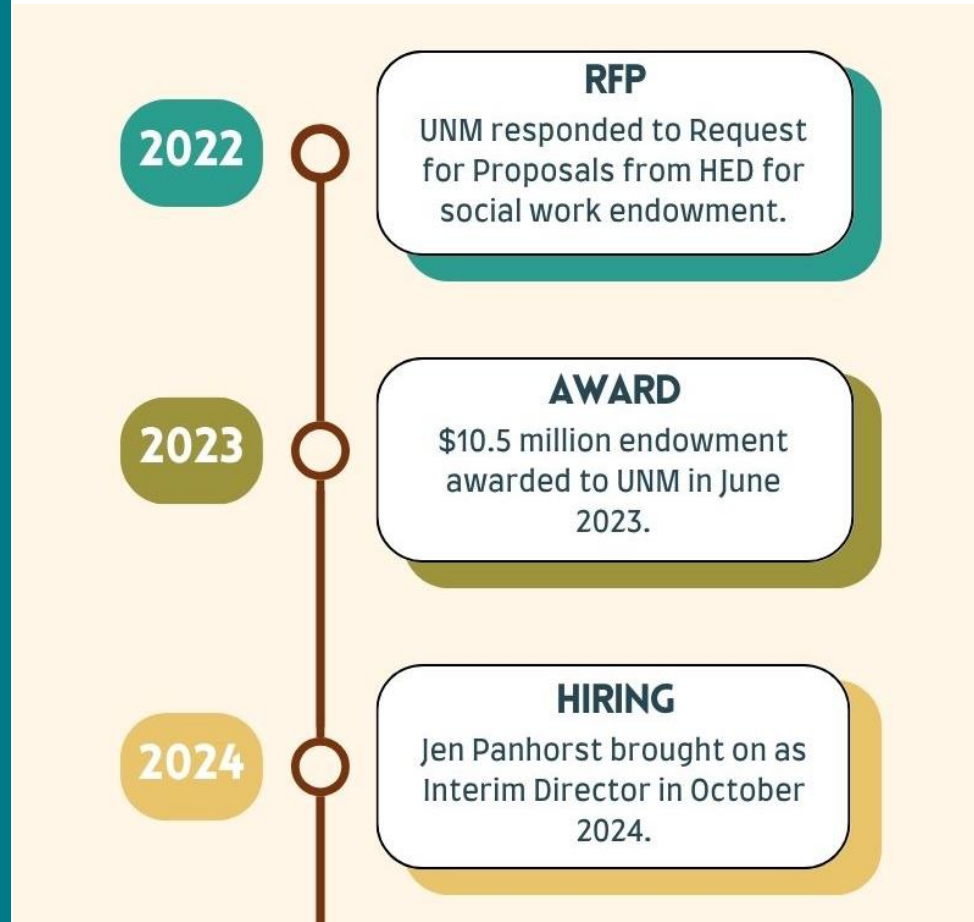


UNM MSW Program Overview for Faculty Senate

November 25th, 2025

Background



- Utilization of existing funds: the program will use already allocated funds without requiring new expenditures, ensuring budget neutrality
- Strategic institutional role: UNM HSC is the only medical academic center in NM without a social work program, positioning us uniquely to fill this gap.
- General education in support of healthcare workforce expansion: Academic Affairs, along with key partners that include the Office of the Provost and the Health Sciences Center, is leading a task force to support the goal of doubling the healthcare workforce.

Program design

- The MSW program will be in the School of Medicine Department of Psychiatry and Behavioral Sciences
 - This will be a *2-year program*
 - Learning will largely be done *in-person after 5 pm*
 - Admissions will occur in *both fall and spring*
 - Interdisciplinary learning with health professions
 - *Two concentration tracks* to start the program (students must pick one):
 - Clinical social work
 - Medical social work
 - Unique to the State of New Mexico

YEAR 1: FOUNDATION (30 CREDITS)
ALL STUDENTS TAKE SAME COURSES



YEAR 2: ADVANCED PRACTICE (30 CREDITS)
15 REQUIRED CREDITS FOR ALL STUDENTS
+ 15 CREDITS IN CHOSEN CONCENTRATION



**Clinical
Social
Work**



**Medical
Social
Work**

Accreditation status:
pre-candidacy is a critical milestone toward full accreditation



COUNCIL ON SOCIAL WORK EDUCATION

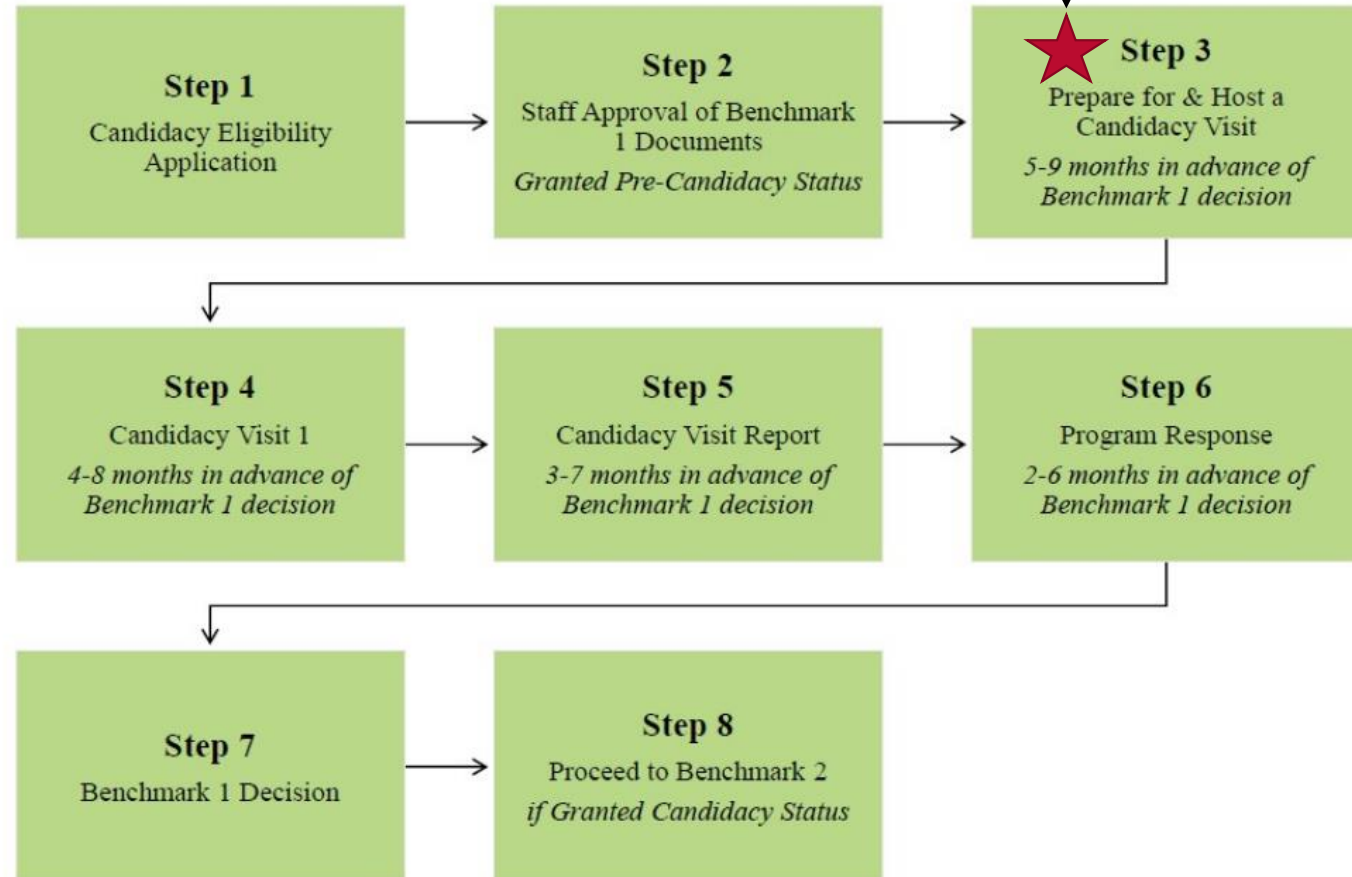
Board of Accreditation (BOA)

Department of Social Work Accreditation (DOSWA)

Baccalaureate and Master's Social Work Program Accreditation

Candidacy | Benchmark 1 - Process Overview

We are here



Closing

- Accreditation status allows for us to have students start as soon as Fall 2026
- However, we need a few more approvals before we can go live with an admissions process
- Faculty Senate approval is a key partnership step that *ensures alignment with accreditation progress and supports timely enrollments*
- Together we uphold academic quality and meet New Mexico's urgent workforce needs